

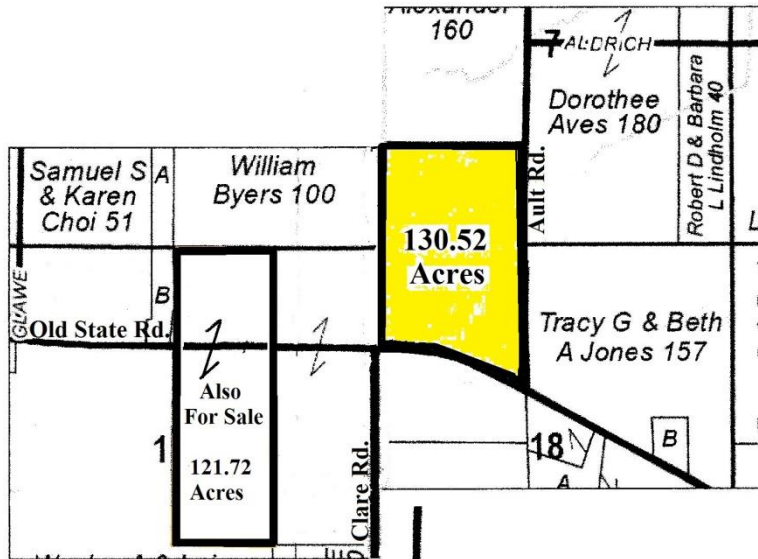


**Richard Hoffman**  
Managing Broker  
hoffmanrealty@yahoo.com  
(815) 522-3255

535 Babson Rd  
Monroe Center, IL 61052  
Fax: (866) 310-5607  
website: [www.hoffman-realty.com](http://www.hoffman-realty.com)

**Matt Hoffman**  
Broker  
mhoffmanrealty@yahoo.com  
(815) 501-3351

## 130.52 Acres Old State Rd and Ault Rd Kirkland, IL

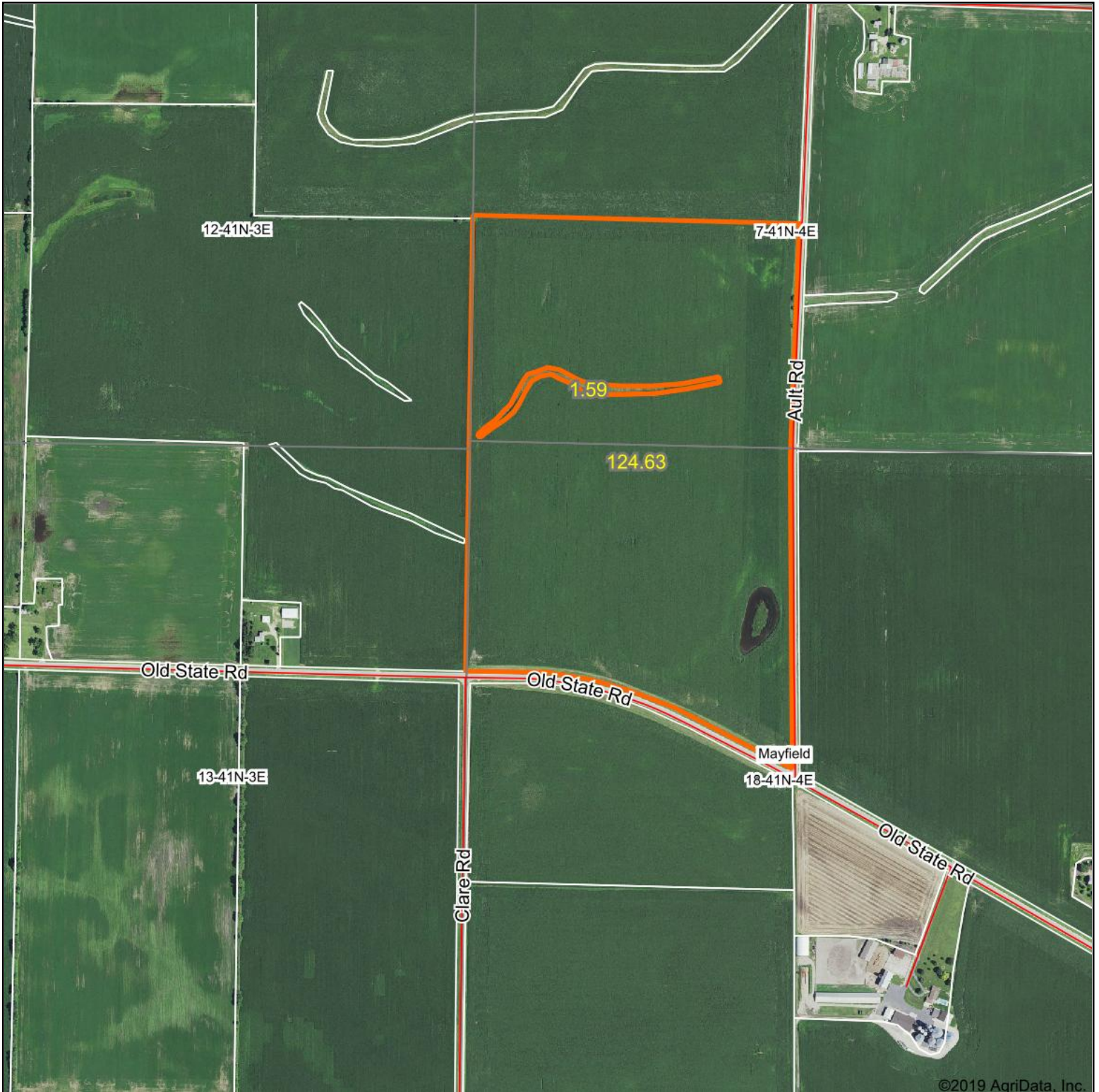


**2019 corn yield: 232 bushels per acre!**

- LOCATION:** Hwy 64 west of Sycamore to Clare Rd. North to Old State Rd. Section 7 and 18 of Mayfield Twp., DeKalb County, IL.
- ACRES:** 130.52 total surveyed acres, approximately 124.6 crop acres.
- PRICE:** \$10,000/ac. Total \$1,305,200.
- SOILS:** PI rating of 138.5: Danabrook, Elpaso, Flanagan, Blackberry, Catlin, Harpster, La Rose, Drummer
- TAXES:** PINS: 05-07-300-002, part of 05-18-100-001. Taxes for 2017: \$6,095.
- COMMENTS:** Highly productive, Class A soils, DeKalb County farm. Also available 121.72 acres at \$10,000 per acre.

The information provided is considered to be accurate but there is no guarantee. Subject to change at any time.

# Aerial Map

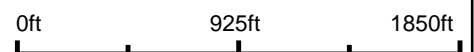


©2019 AgriData, Inc.

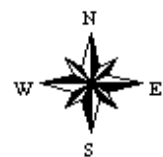


Maps Provided By:  
 **surety**  
CUSTOMIZED ONLINE MAPPING  
© AgriData, Inc. 2019 [www.AgriDataInc.com](http://www.AgriDataInc.com)

map center: 42° 2' 10.23, -88° 49' 40.45

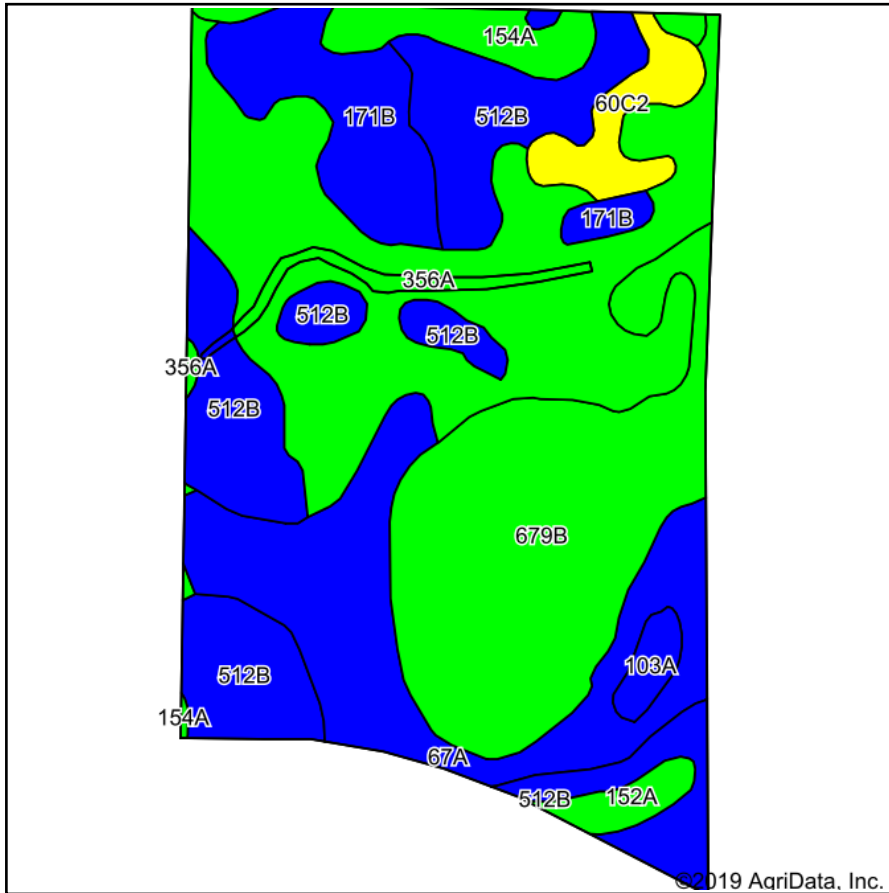


**18-41N-4E**  
**De Kalb County**  
**Illinois**

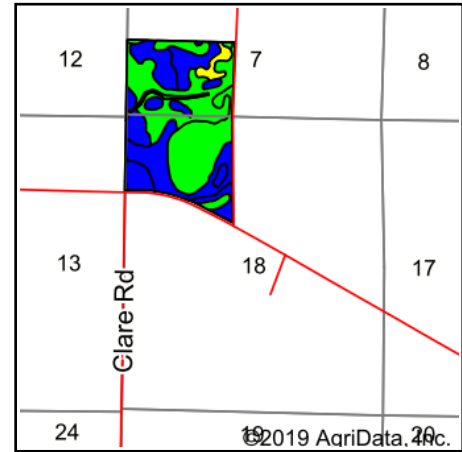


4/15/2019

# Soils Map



Soils data provided by USDA and NRCS.



State: **Illinois**  
 County: **De Kalb**  
 Location: **18-41N-4E**  
 Township: **Mayfield**  
 Acres: **126.22**  
 Date: **4/15/2019**



Maps Provided By:



## Area Symbol: IL037, Soil Area Version: 13

Code	Soil Description	Acres	Percent of field	Il. State Productivity Index Legend	Subsoil rooting a	Corn Bu/A	Soybeans Bu/A	Wheat Bu/A	Oats Bu/A	Sorghum c Bu/A	Alfalfa d hay, T/A	Grass-legume e hay, T/A	Crop productivity index for optimum management
356A	Elpaso silty clay loam, 0 to 2 percent slopes	32.76	26.0%		FAV	195	63	66	102	0	0.00	5.77	144
**679B	Blackberry silt loam, 2 to 5 percent slopes	27.11	21.5%		FAV	**192	**59	**73	**102	0	**6.96	0.00	**141
**512B	Danabrook silt loam, 2 to 5 percent slopes	25.87	20.5%		FAV	**185	**58	**72	**99	0	**6.34	0.00	**137
67A	Harpster silty clay loam, 0 to 2 percent slopes	18.95	15.0%		FAV	182	57	68	89	0	0.00	5.39	133
**171B	Catlin silt loam, 2 to 5 percent slopes	9.78	7.7%		FAV	**185	**58	**72	**98	0	**6.70	0.00	**137
154A	Flanagan silt loam, 0 to 2 percent slopes	4.71	3.7%		FAV	194	63	77	102	0	0.00	5.90	144
**60C2	La Rose loam, 5 to 10 percent slopes, eroded	3.95	3.1%		FAV	**148	**48	**59	**69	0	**4.67	0.00	**110
152A	Drummer silty clay loam, 0 to 2 percent slopes	1.75	1.4%		FAV	195	63	73	100	0	0.00	5.64	144
103A	Houghton muck, 0 to 2 percent slopes	1.34	1.1%		FAV	175	57	0	0	0	0.00	0.00	130
<b>Weighted Average</b>						<b>187.9</b>	<b>59.3</b>	<b>69.1</b>	<b>97</b>	<b>*</b>	<b>3.46</b>	<b>2.61</b>	<b>138.5</b>

**Table: Optimum Crop Productivity Ratings for Illinois Soil by K.R. Olson and J.M. Lang, Office of Research, ACES, University of Illinois at Champaign-Urbana.** Version: 1/2/2012 Amended Table S2 B811

Crop yields and productivity indices for optimum management (B811) are maintained at the following NRES web site: <http://soilproductivity.nres.illinois.edu/>

\*\* Indexes adjusted for slope and erosion according to Bulletin 811 Table S3

**a** UNF = unfavorable; FAV = favorable

**b** Soils in the southern region were not rated for oats and are shown with a zero "0".

**c** Soils in the northern region or in both regions were not rated for grain sorghum and are shown with a zero "0".

**d** Soils in the poorly drained group were not rated for alfalfa and are shown with a zero "0".

**e** Soils in the well drained group were not rated for grass-legume and are shown with a zero "0".

\*c: Using Capabilities Class Dominant Condition Aggregation Method